

Sales Network All Over the World



UK	Portugal	Thailand	China	South Korea	USA
Germany	South Africa	Malaysia	(Taiwan)	Japan	Mexico
Italy	Australia	Singapore	(Hong Kong)	Taiwan	Costa Rica
Switzerland	New Zealand	Philippines		Egypt	Brazil
India	Isreal	Vietnam			Colombia
Russia	Jordan	Indonesia			Argentina
Poland		Sri Lanka			
Czech		Turkey			
France		Pakistan			
Bulgaria		Belgium			
Hungary		Slovenia			

Product Range

- Centerless Grinder
- NC Centerless Grinder
- CNC Centerless Grinder
- High Speed Centerless Grinder
- Universal Cylindrical Grinder
- NC Universal Cylindrical Grinder
- CNC Universal Cylindrical Grinder
- CNC Vertical Composite Grinder
- NC Internal Grinder
- CNC Internal Grinder
- Surface Grinder
- Automatic Loading/Unloading Device



PALMARY MACHINERY CO., LTD.

No. 77, Gongye Rd., Dali Dist., Taichung City 41280, Taiwan.
 TEL: +886-4-2492-9799
 FAX: +886-4-2492-9499
 Email: palmary@grinding.com.tw
<http://www.grinding.com.tw>

THAILAND:

PALMARY MACHINERY CO., LTD.

200 MOO 1 KHAERAI, KRATUMBAN, SAMUTSAKORN THAILAND 74110
 TEL: +66-34-476225~6
 FAX: +66-34-849516
 Email: thailand@grinding.com.tw

CHINA:

SHANGYU DAIKINKO SEIKI CO., LTD.

No.288,Yongxiang Road,Caoe Street,Economic Development Zone,
 Shangyu City,Zhejiang province,China
 TEL: +86-575-82186081~3 FAX: +86-575-82186085
 Email: daikinko@163.com
<http://www.daikinko.com>



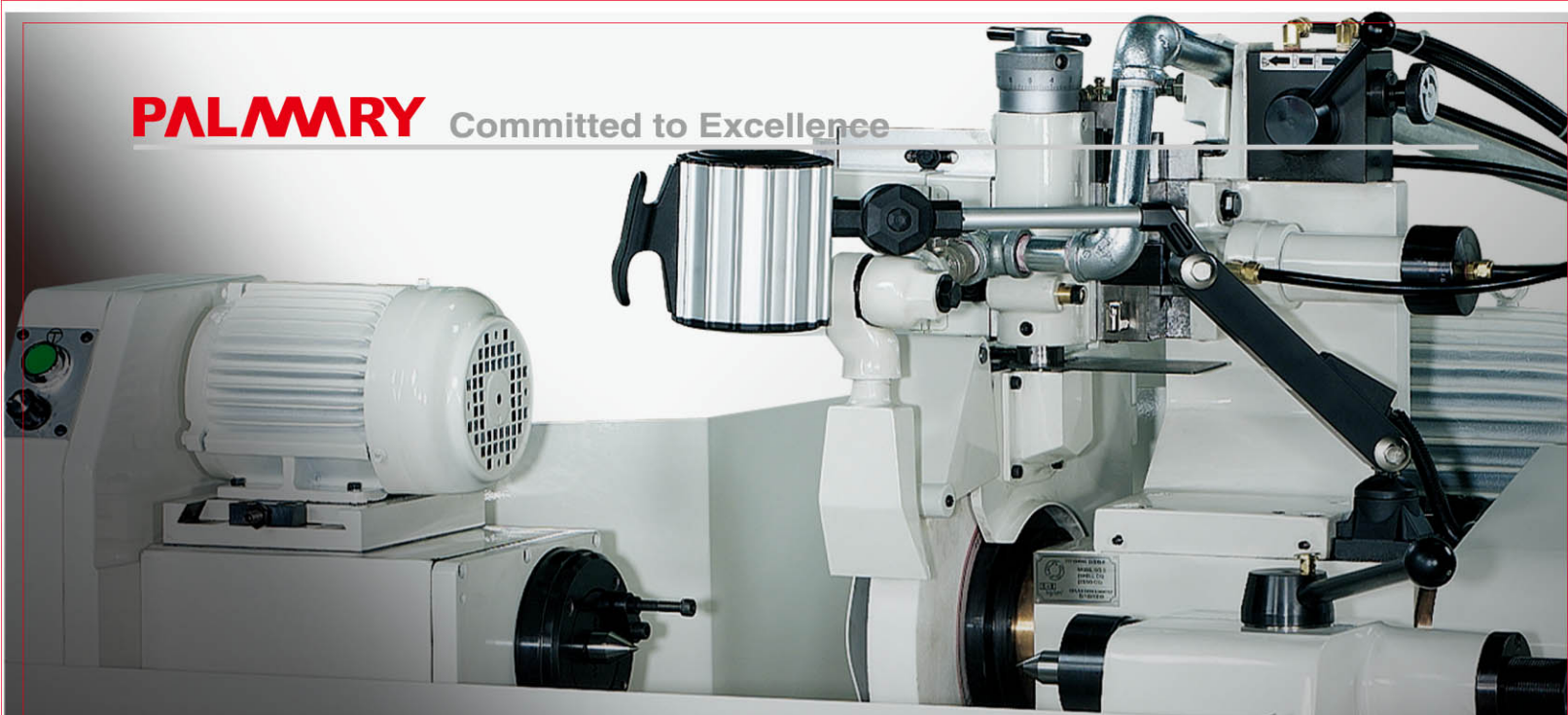
PALMARY
A Total Dedication to New Technological Level



HIGH PRECISION CYLINDRICAL GRINDER
 S Series / NC Series



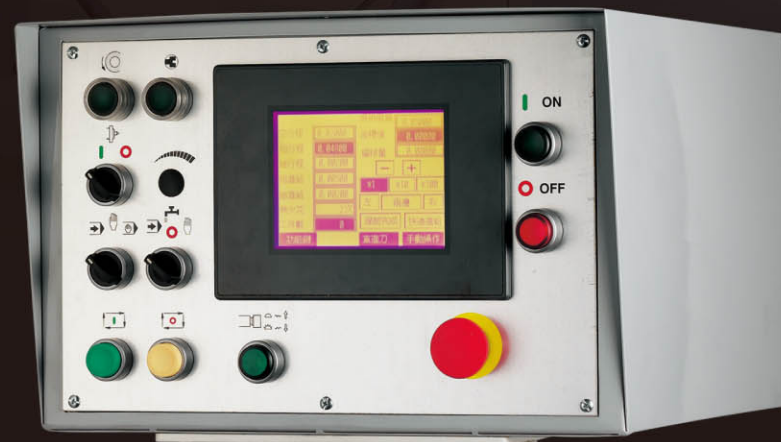
Precise, Perfect and Excellent



Maximum Flexibility PALMARY Cylindrical Grinder State-of-the-art Technology Your Right Choice!

“ Advanced NC Control for User-friendly Operation ”

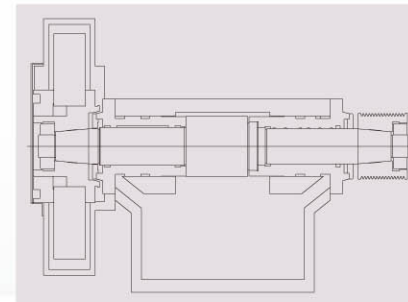
- The wheel head feed on the NC series machine is driven by servomotor combined with NC control assuring maximum operational convenience.
- Humanified operation, conversational control and program-editing-free feature superb operational convenience.
- Easy to set sizes for new parts - saves 1/3 of time compared with conventional setting. Feed amount and feed rate are easy to set as desired.
 - Suitable for small batch production with increased efficiency of over 30%.
- Allows direct change to automatic feed once manual feed is accomplished - without changing program.
 - Available to set for straight plunge grinding and traverse grinding.



Stable and Rigid Spindle Head

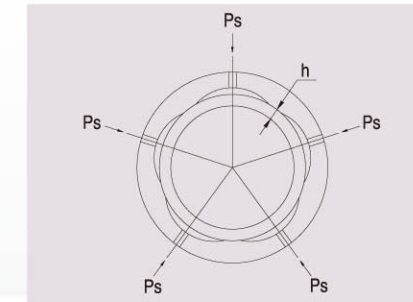
- The spindle runs on precision bearings, assuring maximum spindle stability. It guarantees outstanding accuracy for external and internal diameter grinding and face grinding.
- The spindle head swivels +90° ~ -30°.
- The spindle head on the 20 series machines provides variable speed changed by frequency inverter.
- The spindle head on the 32 and 42 series is driven by servomotor, providing variable speed.

“ PALMARY high precision cylindrical grinders are unmatched in structural rigidity and stability, grinding accuracy and operational convenience. Each machine provides maximum operational flexibility thereby allowing for various grinding operations. You will get extra value when putting a PALMARY cylindrical grinder on your production line. ”



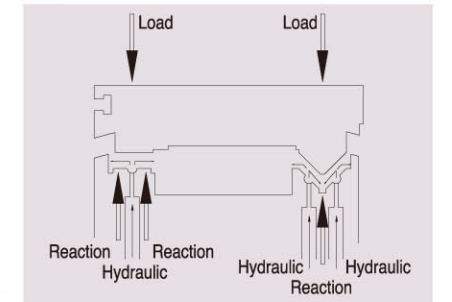
Precision Wheel Head

- The grinding wheel spindle is precision machined from high quality alloy steel SNCM-220, normalized, tempered, carburized and sub-zero treated, precision ground and mirror-effect treated. Hardness reaches to over HRC 62°. No deformation, maximum wear resistance and lifetime accuracy are assured.



Special Hydrostatic Bearing

- The wheel spindle runs by using a special hydrostatic bearing and is especially ideal for precision grinding work. It features high speed, no friction between metals, no heat generation, deformation-free, extra high accuracy and continual use.

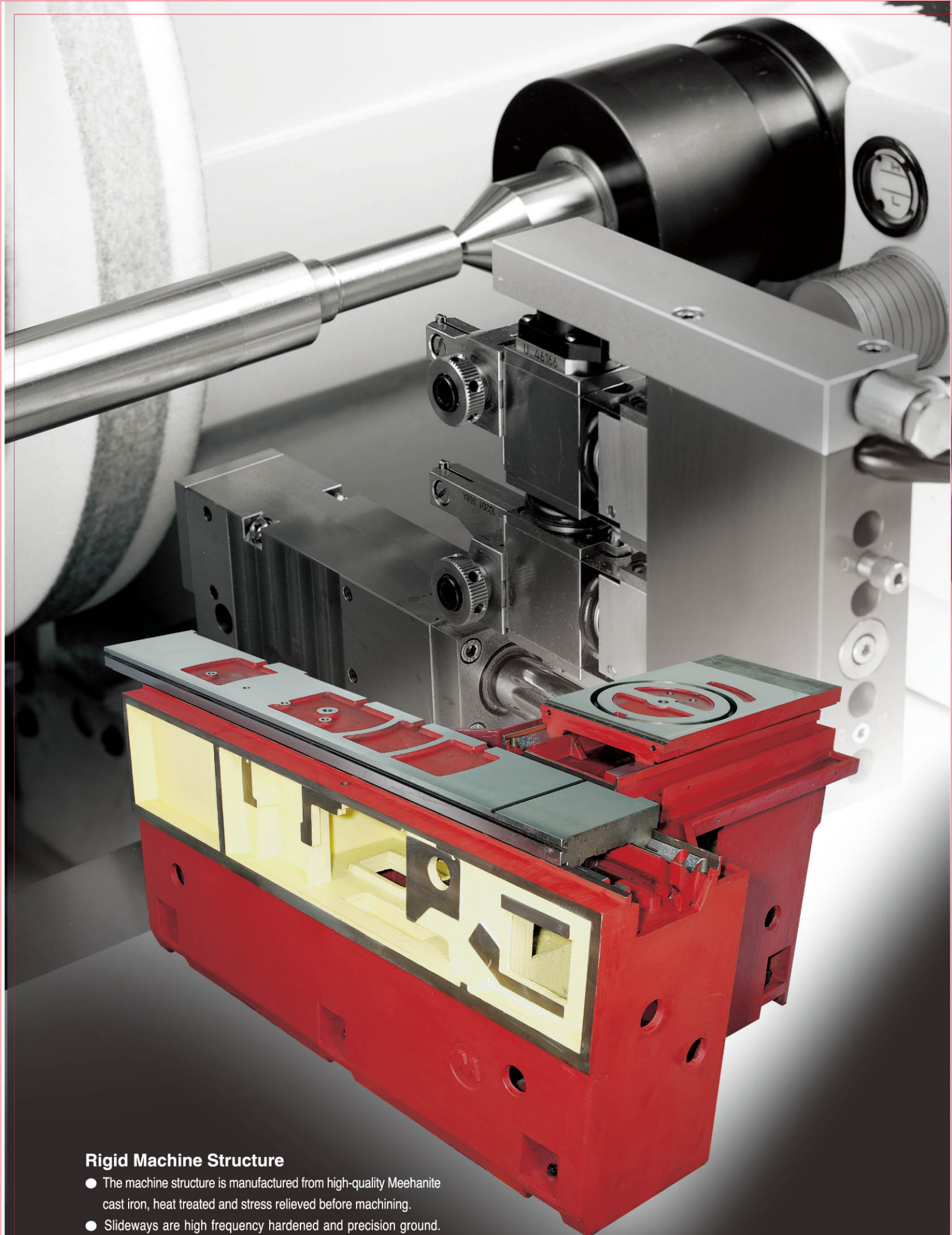


Advanced Hydrostatic Lubrication System

- The slideways of the table and the wheel head are lubricated by an advanced automatic hydrostatic lubrication system. This provides various features, such as extremely smooth movement, added feed accuracy and superior grinding accuracy.

Example of Grinding Workpieces





Rigid Machine Structure

- The machine structure is manufactured from high-quality Meehanite cast iron, heat treated and stress relieved before machining.
- Slideways are high frequency hardened and precision ground. Maximum material stability for deformation-free and outstanding wear resistance.



Care to Every Detail Insist on Quality! PALMARY Cylindrical Grinders

“ Based on PALMARY's tradition of "Pursuing Quality Perfection", combined with human engineering design and peak performance concepts, each machine fully reflects PALMARY's unmatched design and technique. In addition, PALMARY's rigorous quality control gives added assurance of superior quality. ”

Grinding Examples

- A grinder allows for various grinding applications with changeover ease.



Straight Plunge Grinding

- For small lot production, use automatic feed combined with sparkout timer to achieve superior grinding quality. For mass production, use 2-step automatic feed and 2-step automatic measurement device (optional) for upgrading productivity and grinding quality.



Shoulder Grinding

- Provides workpiece outside diameter and shoulder grinding accomplished at a time.
- Easy to set up. Simply clamp the workpiece between two centers, mount the grinding wheel on the right side of wheel head and swivel the head to a degree for performing grinding.



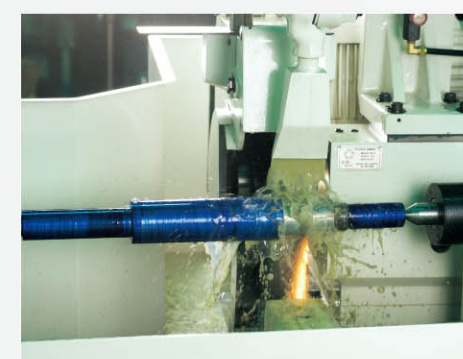
Traverse Grinding

- Use automatically intermittent feed combined with hydraulic drive of table for the most effective traverse grinding operations.



End Surface Grinding

- Dismantle the spindle head cover. Mount a 3-jaw or 4-jaw chuck. Change position of the pin for chuck rotation. Position the pin at a 90 degree angle for end surface grinding.



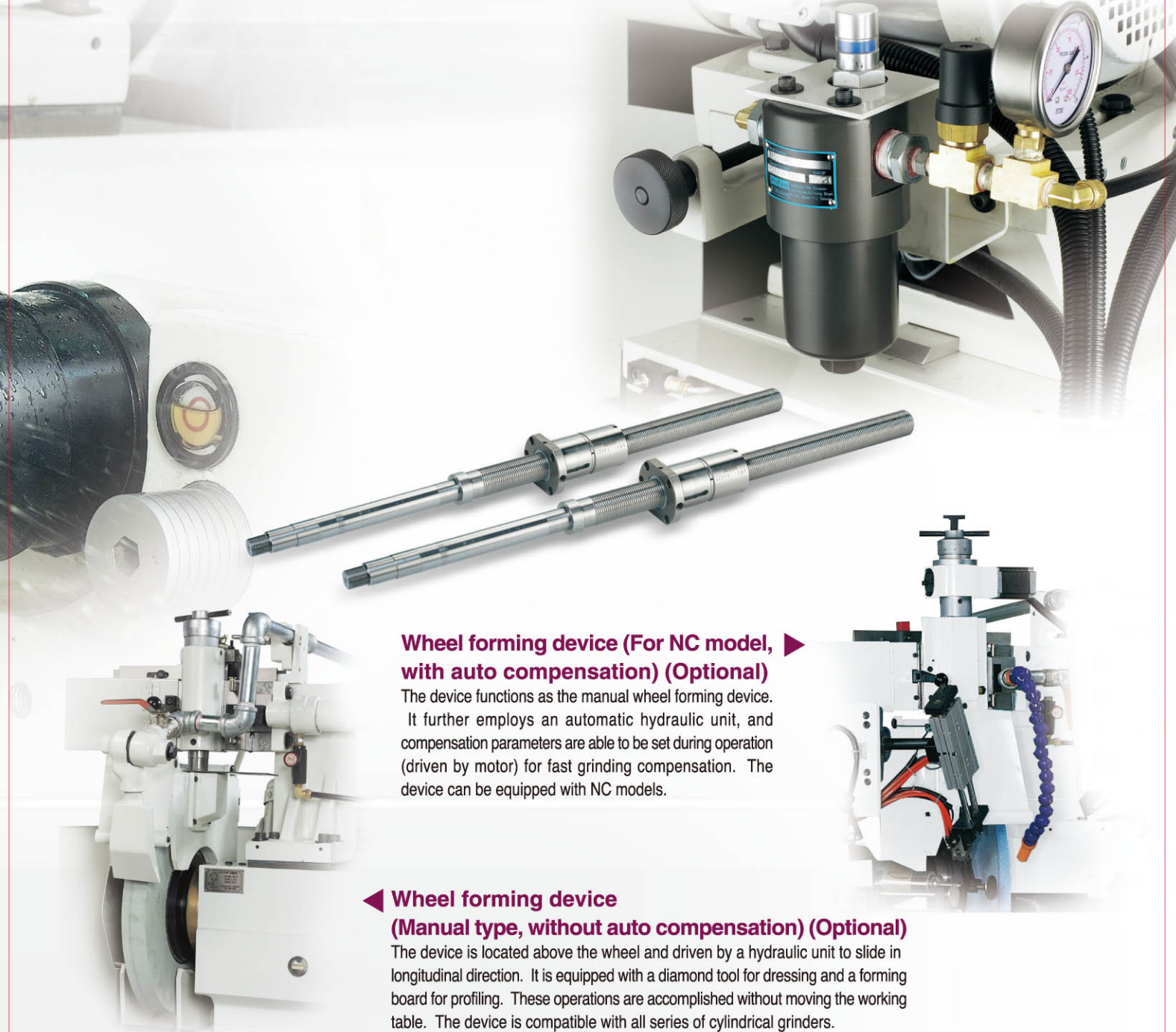
Taper Grinding

- Hold the workpiece by a chuck or two centers. The table and the wheel head can be easily adjusted and swiveled.



Internal Grinding

- To proceed with internal grinding with a hinge-type internal grinding attachment (optional accessory), simply pull down the internal grinding spindle and fix it in place.



Wheel forming device (For NC model, with auto compensation) (Optional)

The device functions as the manual wheel forming device. It further employs an automatic hydraulic unit, and compensation parameters are able to be set during operation (driven by motor) for fast grinding compensation. The device can be equipped with NC models.

Wheel forming device (Manual type, without auto compensation) (Optional)

The device is located above the wheel and driven by a hydraulic unit to slide in longitudinal direction. It is equipped with a diamond tool for dressing and a forming board for profiling. These operations are accomplished without moving the working table. The device is compatible with all series of cylindrical grinders.

High Precision
Cylindrical Grinder
NC Controlled Series

GU20x40NC

- Distance between centers 400 mm.
- Swing over table 200 mm.
- Max. grinding diameter Ø180 mm.
- NC computer controlled combined with conversational operation control for maximum operation convenience.
- Variable spindle speed 10 ~ 300 rpm.
- Automatic feed is driven by servomotor.
- Hydraulically operated traverse feed.



SPECIFICATIONS	GU20x40NC	SPECIFICATIONS	GU20x40NC
Capacity		Tallstock	MT-3
Distance Between Centers	400 mm	Carrier Taper	20 mm
Swivel Over Table	200 mm	Table	
Max. Load of Centers	80 kgs	Swivel Angle	-3°, +12°
Max. External Grinding Diameter	180 mm	Traverse Speed	50 / 4000 mm/min
Wheel Head		Auto. Reciprocate Min. Stroke	8 mm
Swivel Angle	+30°	Feed of One Turn of Handwheel (2-stop)	20 mm (2 mm)
Manual Distance	138 mm	Motor	
Auto Rapid Advance	25 mm	Wheel Spindle	2.1 kw (4 P)
Sliding Seat Supplementary Displacement	95 (total 255 mm)	Workhead Spindle	0.75 kw (4 P)
Min. Setting Unit	0.001 mm	Hydraulic Pump	0.37 kw (4 P)
One Turn of Handwheel (graduation)	2 (0.005) mm	Wheel Spindle Lubrication Pump	0.37 kw (4 P)
Grinding Wheel		Coolant Pump	0.18 kw (2 P)
O.D. x Width x I.D.	305 x 38 x 127 mm	Internal Grinding Spindle	0.18 kw (2 P)
Speeds (belt-type) r.p.m.	2085 / 2495	Tank Capacity	
Work Spindle Head		Wheel Spindle Lubricant Tank	13ℓ
Swivel Angle	120° (+90°, -30°)	Hydraulic Fluid Tank	85ℓ
Carrier Taper	MT-3	Coolant Tank	100ℓ
Spindle Speeds (variable) r.p.m.	10 ~ 300	Machine Weight	
Max. Load of Spindle (tool holder included)	15 kgs (Max length: 100 mm)		2000 kgs

High Precision
Cylindrical Grinder
NC Controlled Series

GU32x60NC

- Swing over table 320 mm.
- Max. grinding diameter Ø300 mm.

GU42x60NC

- Swing over table 420 mm.
- Max. grinding diameter Ø400 mm.

- Common Features:**
- Distance between centers: 600 mm.
 - NC computer controlled combined with conversational operation control for maximum operational convenience.
 - Various spindle speed 10 ~ 300 rpm, driven by servomotor.
 - Automatic feed is driven by servomotor.
 - Hydraulically operated traverse feed.



SPECIFICATIONS	GU32/42x60NC	SPECIFICATIONS	GU32/42x60NC
Capacity		Tallstock	MT-4
Distance Between Centers	600 mm	Carrier Taper	25 mm
Swivel Over Table	320 mm / 420 mm	Table	
Max. Load of Centers	100 kgs / 190kgs	Swivel Angle	-2°, +13°
Max. External Grinding Diameter	300 mm / 400 mm	Traverse Speed	50 / 4000 mm/min
Wheel Head		Auto. Reciprocate Min. Stroke	8 mm
Swivel Angle	+30°	Feed of One Turn of Handwheel (2-stop)	20 mm (2 mm)
Manual Distance	180 mm	Motor	
Auto Rapid Advance	40 mm	Wheel Spindle	3.75 kw (4 P)
Sliding Seat Supplementary Displacement	95 (total 295 mm)	Workhead Spindle	0.8 kw
Min. Setting Unit	0.001 mm	Hydraulic Pump	0.37 kw (4 P)
One Turn of Handwheel (graduation)	2 (0.005) mm	Wheel Spindle Lubrication Pump	0.37 kw (4 P)
Grinding Wheel		Coolant Pump	0.18 kw (2 P)
O.D. x Width x I.D.	386 x 50 x 127 mm	Internal Grinding Spindle	0.75 kw (2 P)
Speeds (belt-type) r.p.m.	1703 / 1940	Tank Capacity	
Work Spindle Head		Wheel Spindle Lubricant Tank	13ℓ
Swivel Angle	120° (+90°, -30°)	Hydraulic Fluid Tank	85ℓ
Carrier Taper	MT-4	Coolant Tank	100ℓ
Spindle Speeds (variable) r.p.m.	10 ~ 300	Machine Weight	
Max. Load of Spindle (tool holder included)	35 kgs (Max length: 150 mm)		2600 kgs / 2800 kgs

High Precision
Cylindrical Grinder
NC Controlled Series

GU32x100NC

- Swing over table 320 mm.
- Max. grinding diameter Ø300 mm.

GU42x100NC

- Swing over table 420 mm.
- Max. grinding diameter Ø400 mm.

- Common Features:**
- Distance between centers: 1,000 mm, 1,500 mm, 2,000 mm.
 - NC computer controlled combined with conversational operation control for maximum operational convenience.
 - Various spindle speed 10 ~ 300 RPM, driven by servomotor.
 - Automatic feed is driven by servomotor.
 - Hydraulically operated traverse feed.



SPECIFICATIONS	GU32x100NC / GU32x150NC / GU32x200NC	SPECIFICATIONS	GU32x100NC / GU32x150NC / GU32x200NC
Capacity		Tallstock	MT-4
Distance Between Centers	1000 mm, 1500 mm, 2000 mm	Carrier Taper	25 mm
Swivel Over Table	320 mm / 420 mm	Table	
Max. Load of Centers	100 kgs / 190 kgs	Swivel Angle	-2°, -0° (100 Typ), -2°, +13° (150 Typ), -1°, -1° (200 Typ)
Max. External Grinding Diameter	300 mm / 400 mm	Traverse Speed	50 / 4000 mm/min
Wheel Head		Auto. Reciprocate Min. Stroke	8 mm
Swivel Angle	+30°	Feed of One Turn of Handwheel (2-stop)	20 mm (2 mm)
Manual Distance	180 mm	Motor	
Auto Rapid Advance	40 mm	Wheel Spindle	3.75 kw (4 P)
Sliding Seat Supplementary Displacement	95 (total 295 mm)	Workhead Spindle	1.3 kw
Min. Setting Unit	0.001 mm	Hydraulic Pump	0.37 kw (4 P)
One Turn of Handwheel (graduation)	2 (0.005) mm	Wheel Spindle Lubrication Pump	0.37 kw (4 P)
Grinding Wheel		Coolant Pump	0.18 kw (2 P)
O.D. x Width x I.D.	386 x 50 x 127 mm	Internal Grinding Spindle	0.75 kw (2 P)
Speeds (belt-type) r.p.m.	1703 / 1940	Tank Capacity	
Work Spindle Head		Wheel Spindle Lubricant Tank	13ℓ
Swivel Angle	120° (+90°, -30°)	Hydraulic Fluid Tank	85ℓ
Carrier Taper	MT-4	Coolant Tank	100ℓ
Spindle Speeds (variable) r.p.m.	10 ~ 300	Machine Weight	
Max. Load of Spindle (tool holder included)	35 kgs (Max length: 150 mm)		3000 kgs / 3400 kgs / 4100 kgs / 4300 kgs / 6000 kgs / 6200 kgs

High Precision
Cylindrical Grinder
Economic Series

GU20x40S

- Distance between centers 400 mm.
- Swing over table 200 mm.
- Max. grinding diameter Ø180 mm.
- Variable spindle speed 10 ~ 300 rpm. Frequency inverter control type.
- Semi-auto feed. Hydraulically operated traverse moving.
- Wheel head provides rapid feed and manual feed for grinding.



SPECIFICATIONS	GU20x40S	SPECIFICATIONS	GU20x40S
Capacity		Tailstock	
Distance between Centers	400 mm	Taper Center	MT:3
Swivel Over Table	200 mm	Stroke	20 mm
Max. Load of Centers	60 kgs	Table	
Max. External Grinding Diameter	180 mm	Swivel Angle	-3°, +12°
Wheel Head		Traverse Speed	50 / 4000 mm/min
Swivel Angle	±30°	Auto. Reciprocate Min. Stroke	8 mm
Manual Distance	135 mm	Feed of One Turn of Handwheel (2-step)	20 mm (2 mm)
Auto Rapid Advance	25 mm	Motor	
Sliding Seat Supplementary Displacement	95 (total 255 mm)	Wheel Spindle	2.1 kw (4 P)
Min. Setting Unit (Micro-adjust)	0.001 mm	Workhead Spindle	0.75 kw (4 P)
One Turn of Handwheel (graduation)	2 (0.005) mm	Hydraulic Pump	0.37 kw (4 P)
Grinding Wheel		Wheel Spindle Lubrication Pump	0.37 kw (4 P)
O.D. x Width x I.D.	305 x 38 x 127 mm	Coolant Pump	0.18 kw (2 P)
Speeds (belt type) r.p.m.	2085 / 2495	Internal Grinding Spindle	0.18 kw (2 P)
Work Spindle Head		Tank Capacity	
Swivel Angle	120° (+90°, -30°)	Wheel Spindle Lubricant Tank	12ℓ
Center Taper	MT:3	Hydraulic Fluid Tank	65ℓ
Spindle Speeds (variable) r.p.m.	10~300	Coolant Tank	100ℓ
Max. Load of Spindle (tool holder included)	15 kgs (Max length: 100 mm)	Machine Weight	
		Kgs	2000 kgs

High Precision
Cylindrical Grinder
Economic Series

GU32x60S

- Swing over table 320 mm.
- Max. grinding diameter Ø300 mm.

GU42x60S

- Swing over table 420 mm.
- Max. grinding diameter Ø400 mm.

- Common Features:**
- Distance between centers: 600 mm.
 - Variable spindle speed 10 ~ 300 rpm, driven by servomotor.
 - Semi-auto feed. Hydraulically operated traverse moving.
 - Wheel head provides rapid feed and manual feed for grinding.



SPECIFICATIONS	GU32/42x60S	SPECIFICATIONS	GU32/42x60S
Capacity		Tailstock	
Distance between Centers	600 mm	Taper Center	MT:4
Swivel Over Table	320 mm / 420 mm	Stroke	25 mm
Max. Load of Centers	100 kgs / 150kgs	Table	
Max. External Grinding Diameter	300 mm / 400 mm	Swivel Angle	-2°, +13°
Wheel Head		Traverse Speed	50 / 4000 mm/min
Swivel Angle	±30°	Auto. Reciprocate Min. Stroke	8 mm
Manual Distance	160 mm	Feed of One Turn of Handwheel (2-step)	20 mm (2 mm)
Auto Rapid Advance	40 mm	Motor	
Sliding Seat Supplementary Displacement	95 (total 295 mm)	Wheel Spindle	3.75 kw (4 P)
Min. Setting Unit (Micro-adjust)	0.001 mm	Workhead Spindle	0.85 kw / 1.3 kw
One Turn of Handwheel (graduation)	2 (0.005) mm	Hydraulic Pump	0.37 kw (4 P)
Grinding Wheel		Wheel Spindle Lubrication Pump	0.37 kw (4 P)
O.D. x Width x I.D.	355 x 50 x 127 mm	Coolant Pump	0.18 kw (2 P)
Speeds (belt type) r.p.m.	1783 / 1940	Internal Grinding Spindle	0.75 kw (2 P)
Work Spindle Head		Tank Capacity	
Swivel Angle	120° (+90°, -30°)	Wheel Spindle Lubricant Tank	12ℓ
Center Taper	MT:4	Hydraulic Fluid Tank	65ℓ
Spindle Speeds (variable) r.p.m.	10~300	Coolant Tank	100ℓ
Max. Load of Spindle (tool holder included)	35 kgs (Max length: 150 mm)	Machine Weight	
		Kgs	2800 kgs / 2800 kgs

High Precision
Cylindrical Grinder
Economic Series

GU32x100S GU42x100S

- Swing over table 320 mm.
- Max. grinding diameter Ø300 mm.
- Swing over table 420 mm.
- Max. grinding diameter Ø400 mm.

- Common Features:**
- Distance between centers: 1,000 mm.
 - Variable spindle speed 10 ~ 300 rpm, driven by servomotor.
 - Semi-auto feed. Hydraulically operated traverse moving.
 - Wheel head provides rapid feed and manual feed for grinding.



High Precision
Cylindrical Grinder
Economic Series

**GU32x150S GU42x150S
GU32x200S GU42x200S**

- Swing over table 320 mm.
- Max. grinding diameter Ø300 mm.
- Swing over table 420 mm.
- Max. grinding diameter Ø400 mm.

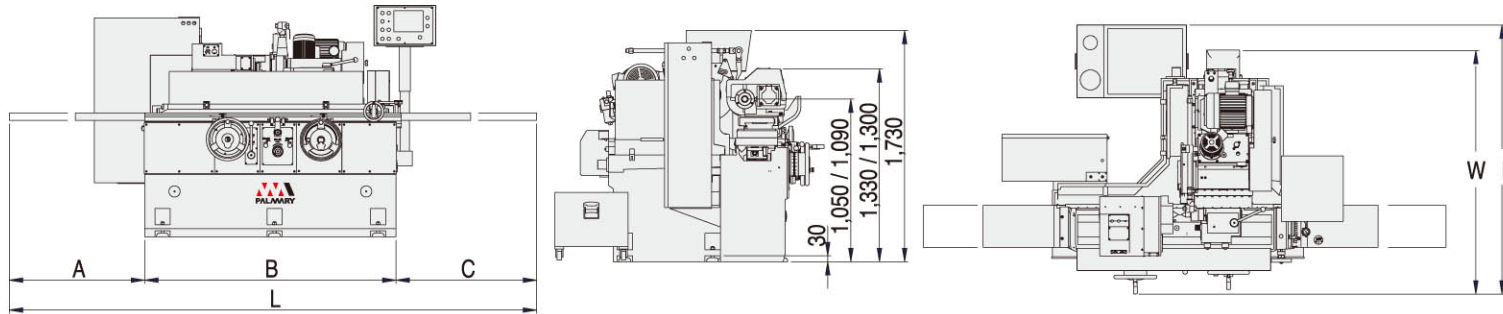
- Common Features:**
- Distance between centers: 1,500 mm, 2,000 mm.
 - Variable spindle speed 10 ~ 300 rpm, driven by servomotor.
 - Semi-auto feed. Hydraulically operated traverse moving.
 - Wheel head provides rapid feed and manual feed for grinding.



SPECIFICATIONS	GU32/42x100S	SPECIFICATIONS	GU32/42x100S
Capacity		Tailstock	
Distance between Centers	1000 mm	Taper Center	MT:4
Swivel Over Table	320 mm / 420 mm	Stroke	25 mm
Max. Load of Centers	100 kgs / 150 kgs	Table	
Max. External Grinding Diameter	300 mm / 400 mm	Swivel Angle	-3°, +8°
Wheel Head		Traverse Speed	50 / 4000 mm/min
Swivel Angle	±30°	Auto. Reciprocate Min. Stroke	8 mm
Manual Distance	160 mm	Feed of One Turn of Handwheel (2-step)	20 mm (2 mm)
Auto Rapid Advance	40 mm	Motor	
Sliding Seat Supplementary Displacement	95 (total 295 mm)	Wheel Spindle	3.75 kw (4 P)
Min. Setting Unit (Micro-adjust)	0.001 mm	Workhead Spindle	0.85 kw / 1.3 kw
One Turn of Handwheel (graduation)	2 (0.005) mm	Hydraulic Pump	0.37 kw (4 P)
Grinding Wheel		Wheel Spindle Lubrication Pump	0.37 kw (4 P)
O.D. x Width x I.D.	355 x 50 x 127 mm	Coolant Pump	0.18 kw (2 P)
Speeds (belt type) r.p.m.	1783 / 1940	Internal Grinding Spindle	0.75 kw (2 P)
Work Spindle Head		Tank Capacity	
Swivel Angle	120° (+90°, -30°)	Wheel Spindle Lubricant Tank	12ℓ
Center Taper	MT:4	Hydraulic Fluid Tank	65ℓ
Spindle Speeds (variable) r.p.m.	10~300	Coolant Tank	100ℓ
Max. Load of Spindle (tool holder included)	35 kgs (Max length: 150 mm)	Machine Weight	
		Kgs	3200 kgs / 3400 kgs

SPECIFICATIONS	GU32/42x150S / GU32/42x200S	SPECIFICATIONS	GU32/42x150S / GU32/42x200S
Capacity		Tailstock	
Distance between Centers	1500 mm, 2000 mm	Taper Center	MT:4
Swivel Over Table	320 mm / 420 mm	Stroke	25 mm
Max. Load of Centers	100 kgs / 150 kgs	Table	
Max. External Grinding Diameter	300 mm / 400 mm	Swivel Angle	-3°, +7° (150 Type); -1°, +7° (200 Type)
Wheel Head		Traverse Speed	50 / 4000 mm/min
Swivel Angle	±30°	Auto. Reciprocate Min. Stroke	8 mm
Manual Distance	160 mm	Feed of One Turn of Handwheel (2-step)	20 mm (2 mm)
Auto Rapid Advance	40 mm	Motor	
Sliding Seat Supplementary Displacement	95 (total 295 mm)	Wheel Spindle	3.75 kw (4 P)
Min. Setting Unit (Micro-adjust)	0.001 mm	Workhead Spindle	0.85 kw / 1.3 kw
One Turn of Handwheel (graduation)	2 (0.005) mm	Hydraulic Pump	0.37 kw (4 P)
Grinding Wheel		Wheel Spindle Lubrication Pump	0.37 kw (4 P)
O.D. x Width x I.D.	355 x 50 x 127 mm	Coolant Pump	0.18 kw (2 P)
Speeds (belt type) r.p.m.	1783 / 1940	Internal Grinding Spindle	0.75 kw (2 P)
Work Spindle Head		Tank Capacity	
Swivel Angle	120° (+90°, -30°)	Wheel Spindle Lubricant Tank	12ℓ
Center Taper	MT:4	Hydraulic Fluid Tank	65ℓ
Spindle Speeds (variable) r.p.m.	10~300	Coolant Tank	100ℓ
Max. Load of Spindle (tool holder included)	35 kgs (Max length: 150 mm)	Machine Weight	
		Kgs	4100 kgs / 4300 kgs / 6000 kgs / 6200 kgs

Floor Space Occupied and Machine Dimensions



MODEL	A	B	C	L	W	I
20 x 40	590	1,320	460	2,370	1,450	1,650
32 x 60 / 42 x 60	800	1,685	830	3,315	1,650	1,800
32 x 100 / 42 x 100	1,150	2,485	1,090	4,725	1,650	1,800
32 x 150 / 42 x 150	1,265	3,815	1,285	6,365	1,650	1,800
32 x 200 / 42 x 200	1,425	5,210	1,560	8,195	1,750	2,034

Standard Accessories



1. Grinding Wheel and Flange x 1 set



2. Diamond Tool Holder (Table mounted type) x 1 pc



3. Tools and Kits x 1 set



4. Carbide Tipped Work Centers x 2 pcs



5. Coolant Equipment x 1 set



6. Hydraulic Pump with Tank x 1 set



7. Work Lamp x 1 pc

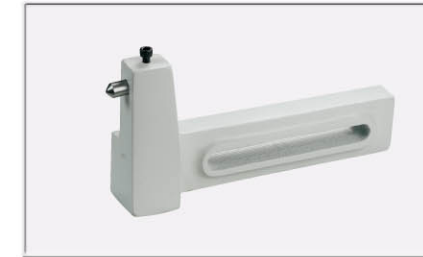
Optional Accessories



1. Internal grinding attachment (including one spindle)



2. Diamond tool holder for internal and external grinding wheel dressing (upward open type)



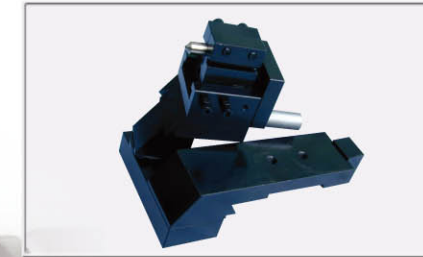
3. Diamond tool holder (Tailstock mounted type)



4. Diamond tool holder for internal and external grinding wheel dressing (sideward open type)



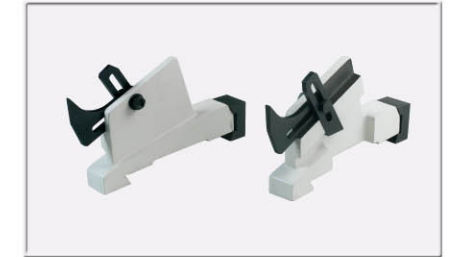
5. Angle trimming device



6. Radius trimming device



7. Cam locked driving dogs (6 pcs/set)



8. Work steady rest (2 pcs/set)



9. 2-point steady rest



10. 3-point steady rest



11. Adjustable 3-jaw scroll chuck



12. Adjustable 4-jaw scroll chuck



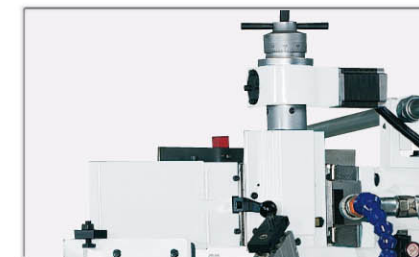
13. Magnetic coolant separator



14. Magnetic coolant separator with paper filter



15. Wheel forming device (Manual type, without auto compensation)



16. Wheel forming device (For NC model, with auto compensation)



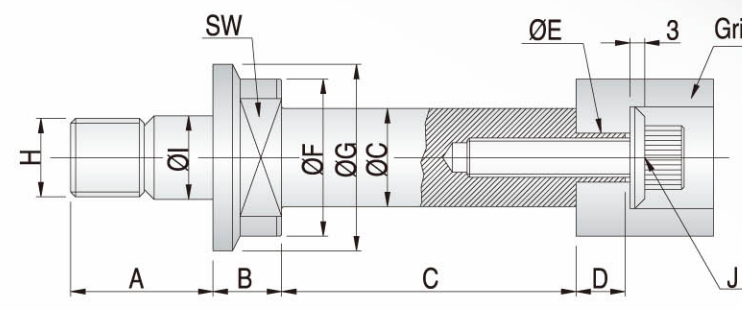
17. Wheel balancing stand and arbor

Rigorous Quality Inspection

● PALMARY's Q.C. department is fully equipped with comprehensive high precision inspection instruments, providing in-process and final product inspections. These precision instruments enable us to achieve the highest levels of quality. PALMARY cylindrical grinders are fully satisfied to every customer around the world. This achievement results from our tradition of "Insisting on Quality."



Internal Grinding Spindle



- The ratio of grinding hole diameter to length is 1 : 3.
- Maximum length is 150 mm.

Grinding	Grease type	A	B	C	D	E	F	G	H	I	J	SW
Ø65 ~ Ø150	8,000rpm	42	16	Ø40 x 100 Ø40 x 85 Ø40 x 55	12	Ø12	Ø50	Ø58	M26 x 2P	Ø28	M8 x 1.25P	41
Ø40 ~ Ø80	10,000rpm	29	14	Ø30 x 90 Ø25 x 70 Ø20 x 60	10	Ø10	Ø32	Ø38	M16 x 1.5P	Ø17	M8 x 1.25P	24
Ø35 ~ Ø70	15,000rpm	29	14	Ø30 x 90 Ø25 x 70 Ø20 x 60	10	Ø10	Ø32	Ø38	M16 x 1.5P	Ø17	M8 x 1.25P	24
Ø24 ~ Ø40	20,000rpm	28	11	Ø24 x 80 Ø20 x 60 Ø16 x 40	8	Ø8	Ø26	Ø32	M14 x 1.5P	Ø15	M6 x 1.0P	19
Ø15 ~ Ø25	30,000rpm	21	9	Ø16 x 40 Ø13 x 30 Ø10 x 25	6	Ø6	Ø21	Ø26	M10 x 1.5P	Ø10.5	M4 x 0.7P	17
Ø12 ~ Ø16	40,000rpm	20	8	Ø12 x 35 Ø10 x 30 Ø8 x 25	x	x	Ø18	Ø23	M8 x 1.25P	Ø8.5	M4 x 0.7P	14
Ø9 ~ Ø13	50,000rpm	18	7	Ø8 x 30 Ø7 x 25 Ø6 x 20	x	x	Ø15	Ø20	M7 x 1P	Ø7.5	M4 x 0.7P	11



Rotary-type Internal Grinding Attachment (Optional Accessory)

- Easy to change over from O.D. grinding to I.D. grinding. The attachment is fixed by the rotary support for convenient workpiece loading.
- To position the internal grinding attachment, simply turn it downward and fix it in the grinding position.
- Allows for external and internal grinding operations in one process.
- Tapered workpieces can be ground by swiveling on the workhead and table.
- The internal grinding attachment on the GU20 series is driven by a 1/2 HP motor.
- The internal grinding attachment on the GU32/42 series is driven by a 1HP motor.